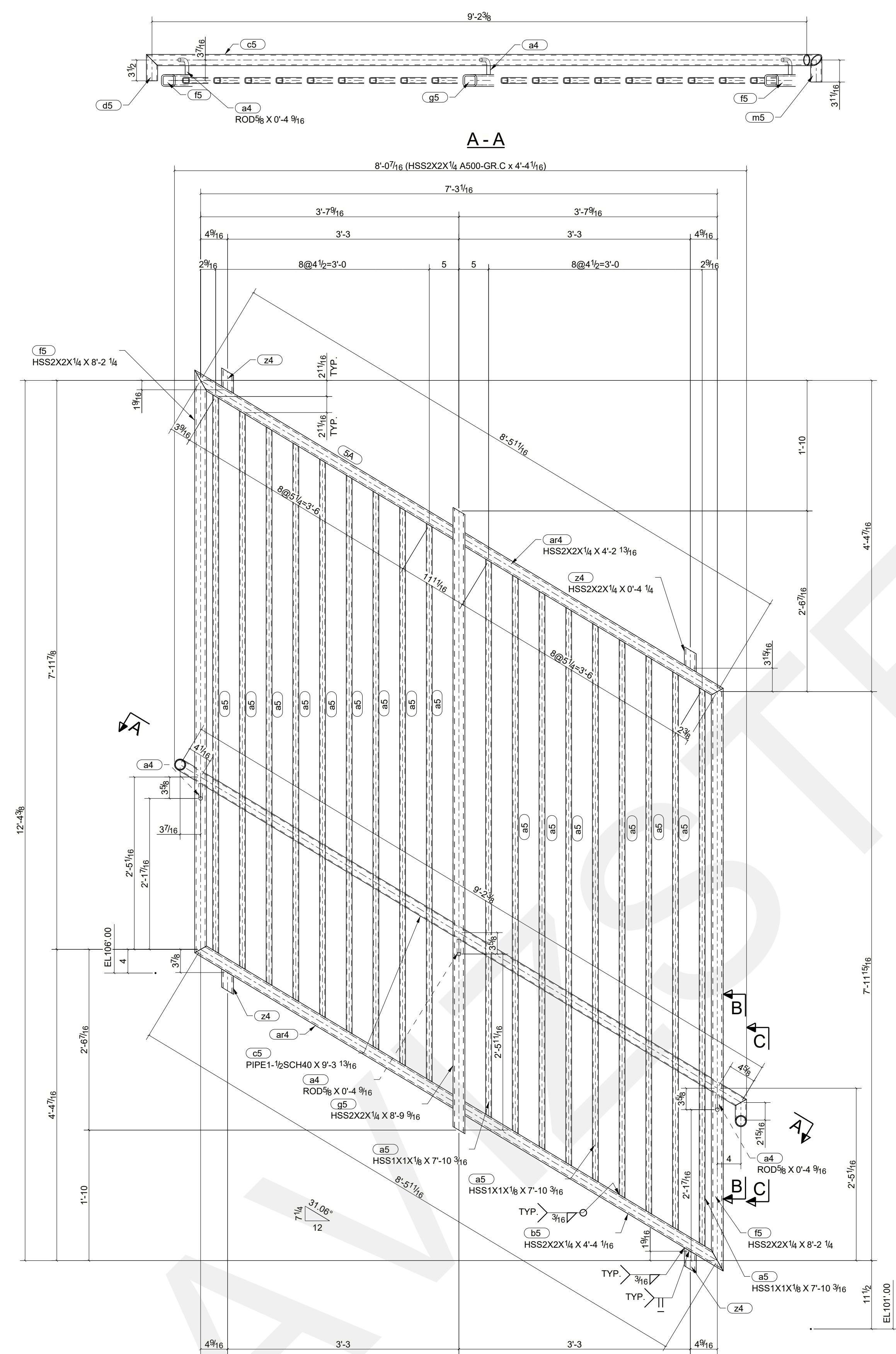
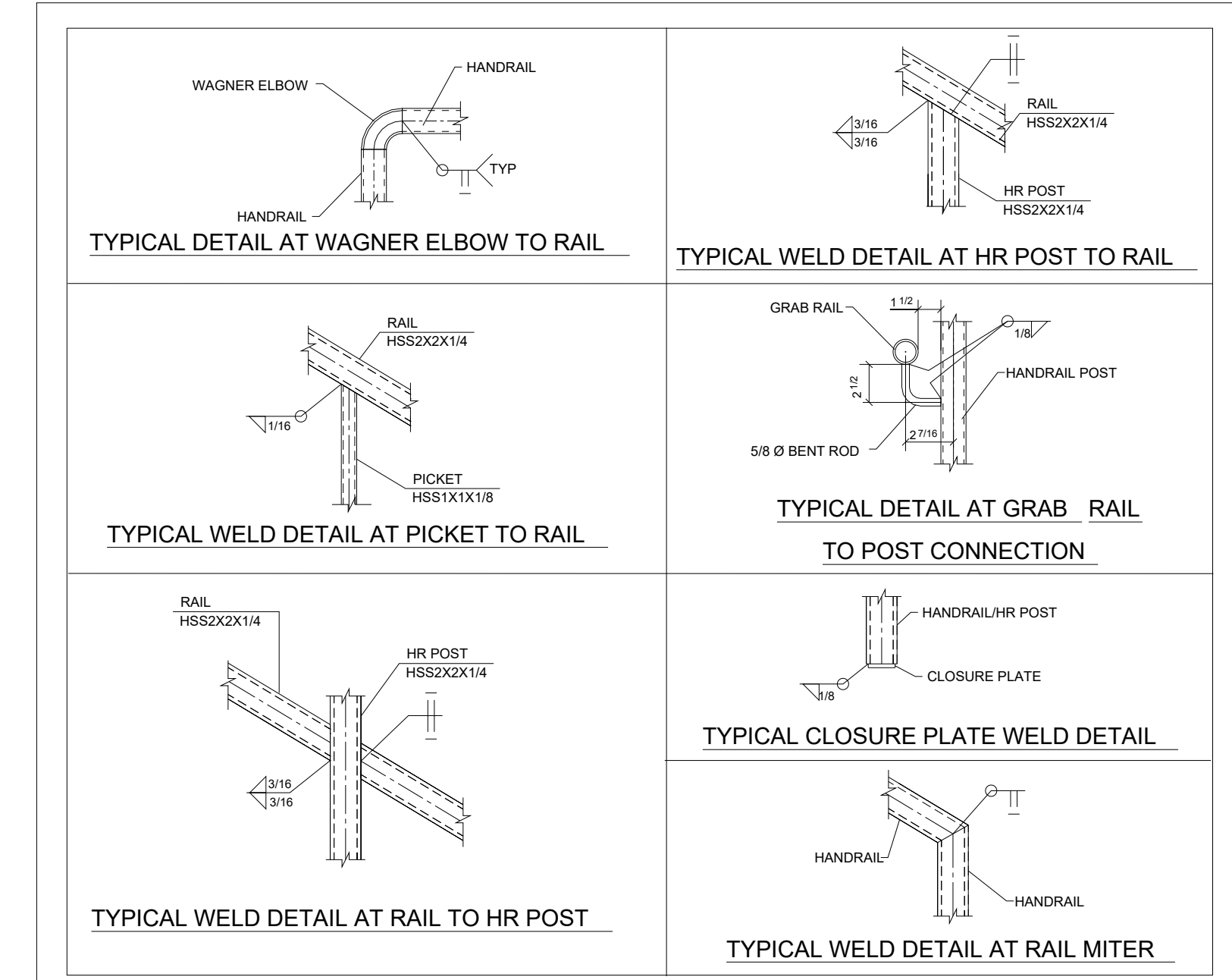
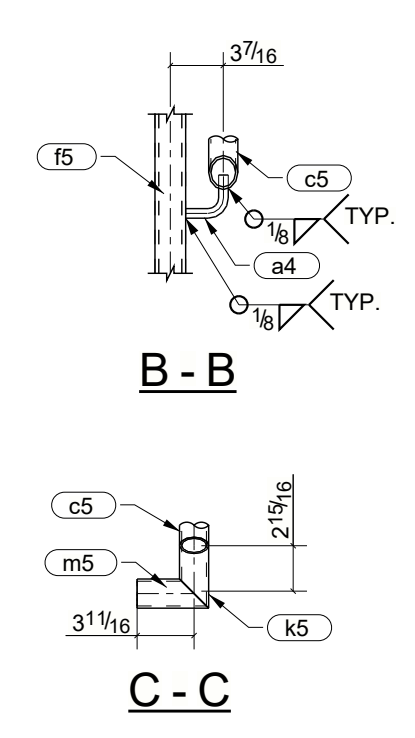


BILL OF MATERIAL

SHIP MARK	PIECE MARK	QTY	DESCRIPTION	LENGTH	REMARKS	FITTER	INSPECT.
5A		1	HSS2X2X1/4	4'-4 1/16"	A500-GR.C		
	a4	3	ROD5/8"	0'-4 9/16"	A36		
	c5	1	PIPE1-1/2SCH40	9'-3 13/16"	A53-GR.B		
	d5	1	PIPE1-1/2SCH40	0'-4 7/16"	A53-GR.B		
	k5	1	PIPE1-1/2SCH40	0'-4 5/8"	A53-GR.B		
	m5	1	PIPE1-1/2SCH40	0'-4 11/16"	A53-GR.B		
	a5	18	HSS1X1X1/8	7'-10 3/16"	A500-GR.C		
	ar4	2	HSS2X2X1/4	4'-2 13/16"	A500-GR.C		
	b5	1	HSS2X2X1/4	4'-4 1/16"	A500-GR.C		
	f5	2	HSS2X2X1/4	8'-2 1/4"	A500-GR.C		
	g5	1	HSS2X2X1/4	8'-9 9/16"	A500-GR.C		
	z4	4	HSS2X2X1/4	0'-4 1/4"	A500-GR.C		



1 ~ CENTRE GUARD ~ 5A



SHOP NOTE
 1. ALL JOINTS BE SEAL WELDED AS REQUIRED
 2. ALL EXPOSED VENT HOLES TO BE PLUGGED AFTER GALVANIZING
 3. PROVIDE VENT/DRAIN HOLES (AS REQUIRED) VISIBLE ON THE UNDERSIDE OF RAILS